

## History

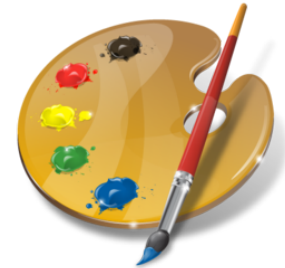
*The Penfield Art Association began because Barbara Hopkins, Marianne Lehmann and Ellen Dickinson loved to paint and create works of art but had no place to display them. They hung the first art exhibition in a Panorama Plaza courtyard laundromat. There they enjoyed the locust trees and flowers while they sat shifts to protect their works of art.*

*In 1963, the Penfield Art Association was officially formed, and John Wagner was the first President. We are now inducting our 37<sup>th</sup> President. Membership has continually grown and we now have over 100 members.*

*The first Penfield Art Association show was held Christmas 1964 in the original Penfield Town Hall on Five Mile Line Rd. Today we have an ongoing exhibit at Penfield Town Hall on Atlantic Ave. In 1987 we began a yearly summer show in June at the Baird Rd. Community Center. We also hold a winter show at Barnes and Noble in Pittsford in February of each year and an additional show at the Legacy in Penfield.*

*Penfield Art Association*  
c/o Nancy Colman  
770 Turk Hill Road  
Fairport, NY 14450

# Penfield Art Association



## Our Purpose

To encourage and promote an appreciation of art in the community. We welcome artists of all skill levels, and people interested in the two-dimensional visual arts.

*“Art is everywhere, except it has to pass through a creative mind”  
Louise Nevelson*

## Shows

The Penfield Art Association has three annual shows: an open show in October sponsored by and at the Legacy of Penfield, one Juried show in February at Barnes & Noble Bookstore in Pittsford, and the open Spring Show at the Penfield Community Center on Baird Road in June. Only paid members (at least one month before the exhibit opens) may submit artwork to those shows. Additionally, the group has a number of rotating exhibits of member artwork in various public and business establishments.

## Membership

PAA is a volunteer organization and, like all such groups, is dependent upon member participation and support. **Active members** are expected to attend the majority of the monthly meetings and to help with shows and various club activities. **Household memberships** are available for households with more than one artist wishing to join. A special **Exhibiting only** membership is available to those who choose to not take an active part in the club but wish to participate in PAA activities and shows. Penfield residency is not required for membership. **Dues** are payable by the first of July since our fiscal year begins on that date. Members who join at any time during the fiscal year will owe their dues again at that time.

## Meeting Times

We meet on the third Tuesday of September, October, November, January, March, April and May at 7 PM at Penfield High School in the Commons, 25 High School Drive, off Five Mile Line Road in Penfield. The typical meeting has a brief business segment dealing with shows and art related matters, followed by a demonstration or presentation by a regional artist in watercolor, oil, acrylic, pastel, pencil or print-making techniques. The focus is on artistic learning and staying informed about community art exhibits and show opportunities. We have a social dimension as well with a party in December and a picnic in June.

### 2016 – 2017 President

Teri Silsby 585-586-5772

Please visit our website at:

[www.penfieldartassociation.com](http://www.penfieldartassociation.com)

## PAA 2016-17 Membership Application

We welcome your membership in PAA and ask that you fill out the form below, sending your check (payable to Penfield Art Association) to our Membership Chair:

**Nancy Colsmán**  
770 Turk Hill Road  
Fairport, NY 14450  
(585) 377-4394  
nancycolsman@att.net

Dues Enclosed: Active (\$25) \_\_\_\_\_  
Exhibiting Only (\$60) \_\_\_\_\_

Household (\$25 for the first member; \$10 for each additional household member) \_\_\_\_\_

Date: \_\_\_\_\_

Name: \_\_\_\_\_

Address: \_\_\_\_\_

Town and Zip: \_\_\_\_\_

Telephone: Daytime \_\_\_\_\_

Evening \_\_\_\_\_

Spouse / Significant Other's Name: \_\_\_\_\_

Email address (much of our contact is by e-mail)

\_\_\_\_\_

Available during the day? Yes \_\_\_\_\_ No \_\_\_\_\_

Favorite Media: \_\_\_\_\_

*Penfield Art Association*