

## ART SHOWS AND SALES

PAA presents three shows each year. Artwork is available for sale at the artist's discretion. A detailed prospectus for each show will be sent to all members. New and renewing members must pay their yearly dues at least one month before the start of a show to be eligible to participate.

Members may also submit digital images of the same paintings in jpeg format to be featured in the online show on our website.

**Fall Show (October)** a non-juried show is held for one month at the Legacy at Willow Pond in Penfield. Members may submit up to three works, plus one optional Penfield Scene.

**Winter Show (February)** is held for one month at Barnes & Noble in Pittsford Plaza. This is a juried show with Best of Show, Juror and Merit Awards. Members may submit up to three works.

**Spring Show (June)** is held for one week at the Penfield Community Center on Baird Road. This is a juried show with awards. Members may submit up to three works plus one in a special category.

Additionally, the group displays a rotating exhibit of members' artwork at the Penfield Town Hall.

## MEMBERSHIP

**Penfield Art Association (PAA)** is a volunteer organization, dependent upon member participation and support. Active and Household members are expected to attend a majority of monthly meetings and to donate their time in support of shows and other club activities. Penfield NY residency is not required for membership. We welcome anyone 18 years or older.

PAA runs on a fiscal year from July 1 to June 30 of the following year. Dues are payable as of July 1 each year. The Association does not pro-rate dues. Full payment is due no matter when you join the PAA, with your dues being renewable again on July 1. The Penfield Art Association has several membership categories to choose from:

- **Active membership** requires that you attend the majority of monthly meetings and volunteer to help with PAA art shows and various Club activities. The Club relies on the active participation of members.
- **Household membership**, same as Active, for households with more than one artist.
- **Exhibiting-only memberships** are available to artists who choose not to take an active part in the PAA but wish to participate in PAA activities and shows.

## PENFIELD ART ASSOCIATION MEMBERSHIP APPLICATION

Please complete this form and mail with your check (payable to Penfield Art Association) to:

Yui Kinney  
7 Surrey Lane  
Pittsford, NY 14534

### Choose a membership category:

- Active** (\$30)
- Household** (\$30 PLUS \$15 for each additional member\* in the same household)
- Exhibiting** (\$65)

Date of application: \_\_\_\_\_

\_\_\_\_\_  
Name

\_\_\_\_\_  
\* Additional member name(s) for Household

\_\_\_\_\_  
Address

\_\_\_\_\_  
City, State, Zip

\_\_\_\_\_  
Telephone

\_\_\_\_\_  
Email address (most information is sent by email)

## ABOUT PENFIELD ART ASSOCIATION

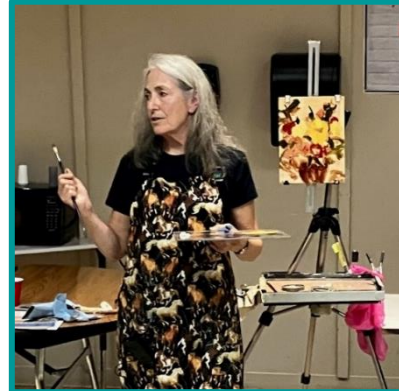
Formed in 1963, PAA now has more than 60 members from throughout the Rochester area. We strive to encourage and promote an appreciation of art in the community and welcome artists of all skill levels and anyone interested in the two-dimensional visual arts. Members work in many media including oils, acrylics, watercolor, pencil, pastels, and mixed media. We learn from each other and from guest artists. Beginners welcome!



Bob Winter, *Linear Park East*

## MEETINGS

PAA meets the third Tuesday of September, October, November, January, March, April and May at the Penfield Community Center, 1985 Baird Road, from 7—9 p.m. The focus is on artistic learning and staying informed about community art exhibits and show opportunities. Artist demonstrations or presentations are held at each meeting, featuring regional artists in various media. Meetings and demos are also presented live on Zoom for members.



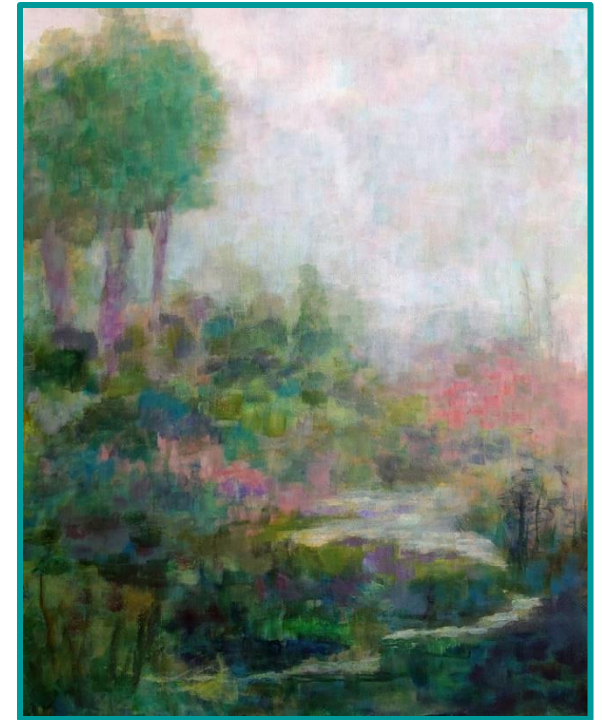
PAA member Victoria Brzustowicz demonstrates *alla prima* oil painting.

*Information in this brochure is current as of January 2023 and is subject to change. Please visit our website [www.penfieldartassociation.com](http://www.penfieldartassociation.com) for more information.*

For more information about joining PAA, visit our website [www.penfieldartassociation.com](http://www.penfieldartassociation.com).

Or contact Doug Bloom at [dbloom1@rochester.rr.com](mailto:dbloom1@rochester.rr.com) or (585) 314-3143.

## PENFIELD ART ASSOCIATION MEMBERSHIP APPLICATION



Doris Hooker, *Spring Promise*

## OUR PURPOSE

To encourage and promote an appreciation of art in the community. We welcome artists of all skill levels and anyone interested in the two-dimensional visual arts.